

Patients undergoing laparoscopic colorectal resection have a lower risk of post-operative ileus than patients undergoing conventional colorectal resection.

Leo Ziegel & Oscar Kjellberg

KS Solna

Petri Rantanen

Conclusions first

Introduction

Colorectal resection is a surgical operation performed as a part of the treatment for colorectal cancer, but also for benign diseases as ulcerative colitis, Crohn's disease and diverticulitis. Open abdominal surgery has long been the gold standard method, but in the 1990s laparoscopic methods were developed. Their short-term effects, like post-operative ileus, have been proposed to be better than open surgery, with some research data supporting this.

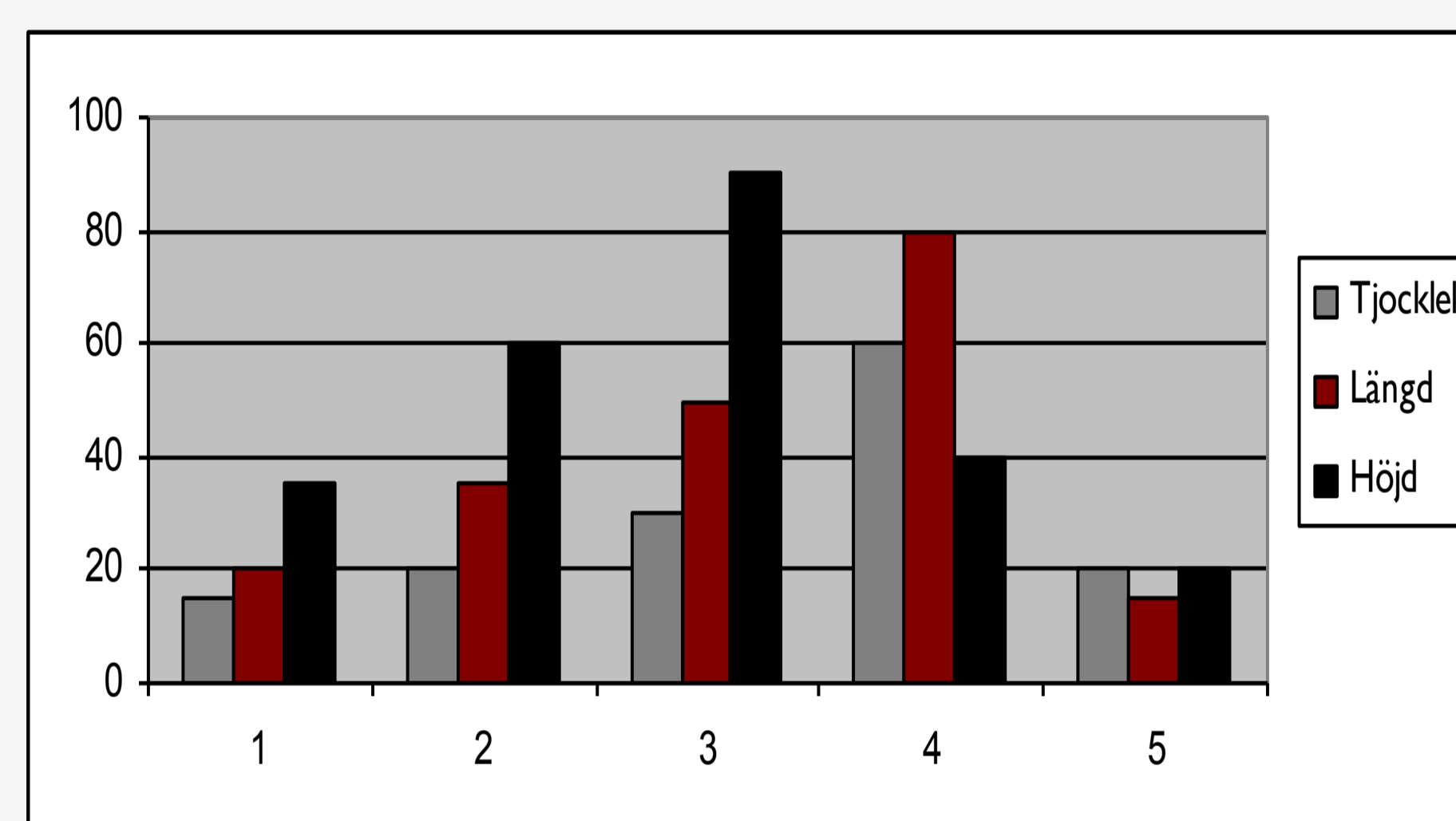
Scientific question

Do patients undergoing laparoscopic (I) colorectal resection (P) have a lower risk of post-operative ileus (O) than patients undergoing conventional colorectal resection (C)?

Search strategy

TRIP: abdominal+surgery, laparoscopic, open+abdominal+surgery, post+operative+ileus PubMed:
hemicolectomy+laparoscopic+open+post+operative+ileus Google Scholar: hemicolectomy+laparoscopic+open postoperative+ileus

Name (year)	Design	Patients	Outcome	Results	Weaknesses
Schwenk W, Haase O, Neudecker JJ, Müller JM (2008)	Systematic review	Colorectal resections		OR 0.42 [0.24, 0.75] ?	
Katherine Grailey • Sheraz R. Markar • Alan Karthikesalingam • Rima Aboud • Paul Ziprin • Omar Faiz (2012)	Systematic review	Colorectal resections		pooled odds ratio = 0.65; 95 % CI = 0.37–1.12; P = 0.12	
Y.Li • S.Wang • S.Gao • C.Yang • W.Yang • S.Guo (2016)		Colorectal resections		(pooled OR = 0.58; 95 % CI = 0.42–0.81; p = 0.001)	



Use diagrams to illustrate your results. 28pt regular

Tips:

It is a good idea to use pictures and write some few short notes of what's going on in the future. Put handouts, business cards, reprints nearby - on a table or in an envelope hung with the poster.

Karolinska Institutet (Arial bold/regular)

First name Surname

Title • Section

Visiting address • Post address

E-mail: bildmakarna@ki.se

Telephone: 08-524 842 01, Fax: 08-000 000 00

Website: bildmakarna.kib.ki.se



**Karolinska
Institutet**