

Best Practice 2018:

Molar Incisiv Hypomineralisation




Stina Ekström, Specialisttandläkare pedodonti




Definition

"hypomineralisation av systemisk ursprung som skadar en eller upp till fyra av de första permanenta molarerna och ofta även förknippas med defekta permanenta incisiver"



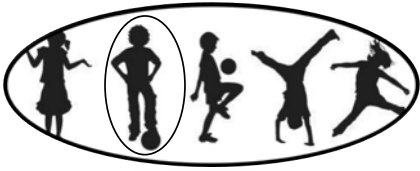
Jälevik B.

2018-09-07 Best Practice del 1 2018 - MH, Stina Ekström




Prevalens

- 6 – 25% i europeiska studier
- 20% av svenska barn



2018-09-07 Best Practice del 1 2018 - MH, Stina Ekström



Indelning

- Lindrig
- Måttlig
- Grav



Jälevik B. 2001, Fagrell T. 2011

2018-09-07 Best Practice del 1 2018 - MH, Stina Ekström



Best Practice 2015 - MIH

- Molar Incisor Hypomineralization

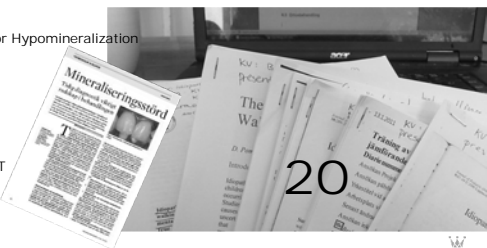
2565

- Review

211


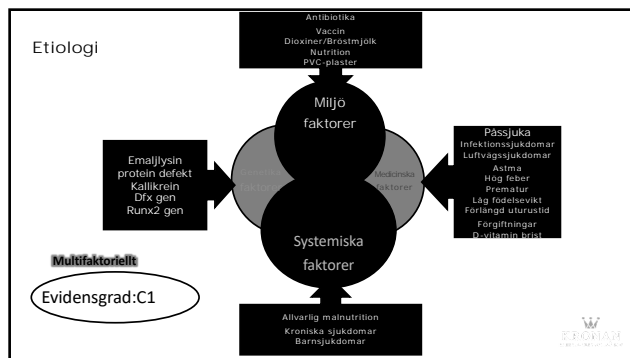
- Review + CT

229



20

2018-09-07 Best Practice del 1 2018 - MH, Stina Ekström

Kronologisk tandutvecklingsstörning

2018-09-07 Best Practice del 1 2018 - MH, Sina Ekström

MIH och Behandling

TM of FPM	Molar Incisor Hypomineralization		Controls		P
	N children with TM (%)	Mean no of TM (SD)	N children with TM (%)	Mean no of TM (SD)	
Fillings, 1999-2008	26 (86)	2.7 (2.0)	12 (32)	0.7 (1.3)	<0.001*
Extractions, 1999-2008	7 (23)	0.7 (1.4)	1 (3)	0.03 (0.2)	<0.01*
Fillings & extractions, 1999-2008	27 (93)	3.4 (2.4)	12 (32)	0.8 (1.3)	<0.001*

FPM, First permanent molar.
*Student's t-test for differences between mean numbers of TM.

Jälevik B, Klingberg G. 2002

2018-09-07 Best Practice del 1 2018 - MH, Sina Ekström

Behandling

- Fluortandkräm

2018-09-07 Best Practice del 1 2018 - MH, Sina Ekström

Behandling

- Fluortandkräm

Evidensgrad: A1

Groups	%Extent of demineralization (mean ± S.D.)	95% Coefficient interval
Group A (tooth mousse)	19.60 ± 7.8*	13.9-25.2
Group B (control)	28.1 ± 7*	23.1-33.1

Within a column, values with similar lower case letters are statistically equivalent.

Groups	%Extent of remineralization (mean ± S.D.)	95% Coefficient interval
Group C (tooth mousse)	7.15 ± 3.7*	3.5-10.4
Group D (control)	4.1 ± 1.5*	3.2-5

Within a column, values with similar lower case letters are statistically equivalent.

Rahiotis C, Vougiouklakis G. 2007

2018-09-07 Best Practice del 1 2018 - MH, Sina Ekström

Behandling

- Fluorlackning

Evidensgrad: C1

2018-09-07 Best Practice del 1 2018 - MH, Sina Ekström

Behandling

- Fluorlackning


Group	Incidence	Progression
5,000 ppm	1.27 ± 1.16	1.14 ± 1.13
1,450 ppm	1.29 ± 1.5	1.58 ± 1.75
A+B	1.21 ± 1.39	1.44 ± 1.48
A+B	1.12 ± 1.23	1.26 ± 1.27
A+B	1.46 ± 1.61	1.38 ± 1.15
A+B	1.47 ± 1.62	1.17 ± 1.21

Nordström A et al 2010

2018-09-07 Best Practice del 1 2018 - MH, Sina Ekström

Behandling

- Blekning

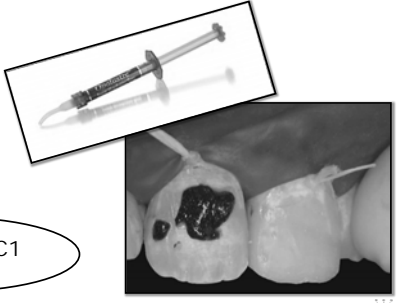


Evidensgrad: C1

2018-09-07 Best Practice del 1 2018 - MH, Sina Ekström

Behandling

- Microabration

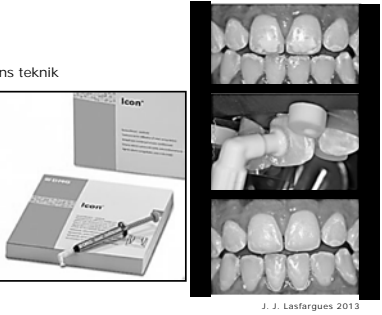


Evidensgrad: C1

2018-09-07 Best Practice del 1 2018 - MH, Sina Ekström

Behandling

- Resin infiltrations teknik



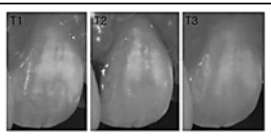
J. J. Lasfargues 2013

Evidensgrad: C2

2018-09-07 Best Practice del 1 2018 - MH, Sina Ekström

Behandling

- Resin infiltrations teknik



Evidensgrad: C2

2018-09-07 Best Practice del 1 2018 - MH, Sina Ekström

	Type 1 (completely masked %)	Type 2 (partially masked %)	Type 3 (unchanged %)	Sum
DDE	5 (25)	7 (35)	8 (40)	20
POD	11 (61)	6 (33)	1 (6)	18

DDE, developmental defects of enamel; POD, post-orthodontic decalcification.
Kim S. et al. 2011, Crombie F. et al. 2014

Behandling

- Fissurförsegling

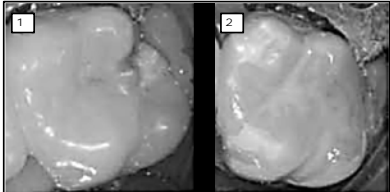


Evidensgrad: C2

2018-09-07 Best Practice del 1 2018 - MH, Sina Ekström

Behandling

- Fissurförsegling



Evidensgrad: C2

2018-09-07 Best Practice del 1 2018 - MH, Sina Ekström

Behandling

- Fissurförsegling

Figure 1. Retention rate of fissure sealants in Group A (adhesive FS) and B (conventional etch and seal FS).

Group	Sealant Status	1st Year	2nd Year	3rd Year	4th Year
Group A	fully sealed	100%	100%	88%	79%
	partly sealed	0%	0%	11%	30%
	unsealed	0%	0%	0%	0%
Group B	fully sealed	79%	47%	27%	24%
	partly sealed	21%	47%	53%	45%
	unsealed	0%	0%	0%	0%

Lygidakis NA, et al. 2009

2018-09-07 Best Practice del 1 2018 - MH, Sina Ekström

Behandling

- Fissurförsegling med resin-baserade material har en kariesförebyggande effekt.
- Det vetenskapliga underlaget är inte tillräckligt för att bedöma om fissurförsegling med glasjonomercement har en kariesförebyggande effekt.

Evidensgrad: C1

SBU, 2002

2018-09-07 Best Practice del 1 2018 - MH, Sina Ekström

Behandling

- Fyllnadsterapi
- Temporära restaurationer

2018-09-07 Best Practice del 1 2018 - MH, Sina Ekström

Behandling

- Fyllnadsterapi
- Temporära restaurationer

Grindejord M.

2018-09-07 Best Practice del 1 2018 - MH, Sina Ekström

Behandling

- Fyllnadsterapi
- Stålkronor

Daly D, et al. 2009

2018-09-07 Best Practice del 1 2018 - MH, Sina Ekström

Behandling

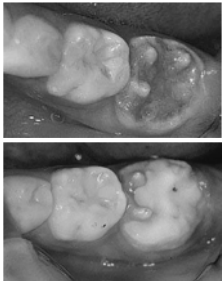
- Fyllnadsterapi
- Glasjonomercement

da Costa-Silva CM et al. 2012

2018-09-07 Best Practice del 1 2018 - MH, Sina Ekström


Behandling

- Fyllnadsterapi
- Glasjonomercement



Grindefjord M.


2018-09-07 Best Practice del 1 2018 - MH, Sina Ekström




Behandling

- Fyllnadsterapi
- Glasjonomercement

Evidensgrad: C1

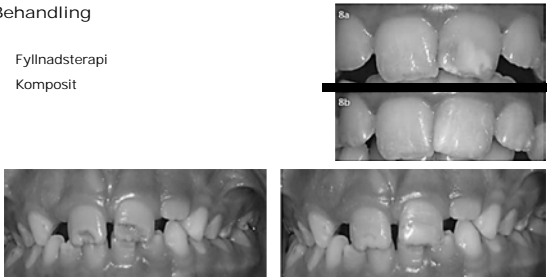


2018-09-07 Best Practice del 1 2018 - MH, Sina Ekström




Behandling

- Fyllnadsterapi
- Komposit



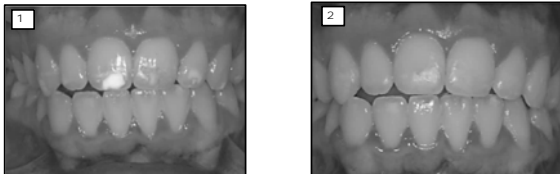
Daly D. et al. 2009, Sailes Scheffel DL et al. 2014

2018-09-07 Best Practice del 1 2018 - MH, Sina Ekström




Behandling

- Fyllnadsterapi
- Komposit

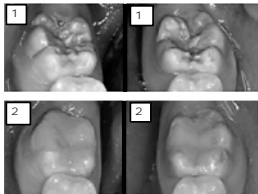


2018-09-07 Best Practice del 1 2018 - MH, Sina Ekström



Behandling


- Fyllnadsterapi
- Komposit



Knapp V. et al. 2009 Lonkar RD. 2012

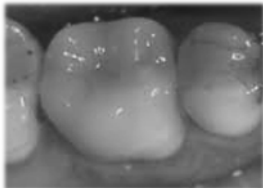
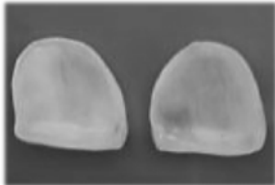
Evidensgrad: C1

2018-09-07 Best Practice del 1 2018 - MH, Sina Ekström




Behandling

- Kronterapi

Evidensgrad: B1

2018-09-07 Best Practice del 1 2018 - MH, Sina Ekström



Behandling

- Kronterapi

Quality after 2 y	Crowns, n	
	Procera	IPS e.max Press
Excellent	108	94
Acceptable	8	11
In need of adjustment	3	2
Immediate danger to tooth	0	1
Total	119	108

Pousette Lundgren G. et al. 2015

2018-09-07 Best Practice del 1 2018 - MH, Sina Ekström

Behandling

- Kronterapi

Gronwall S. 2015

2018-09-07 Best Practice del 1 2018 - MH, Sina Ekström

Behandling

- Extraktion

Evidensgrad: C1

2018-09-07 Best Practice del 1 2018 - MH, Sina Ekström

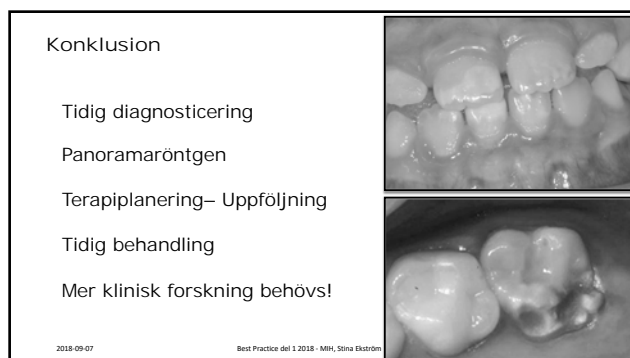
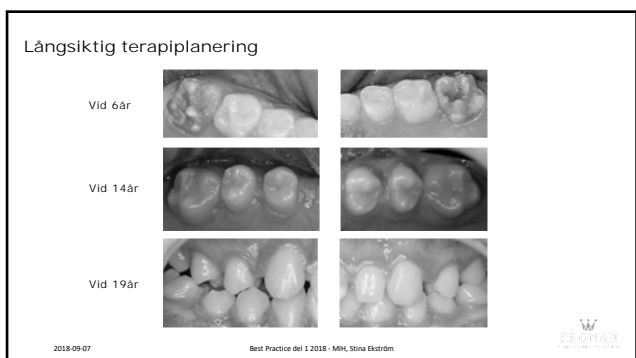
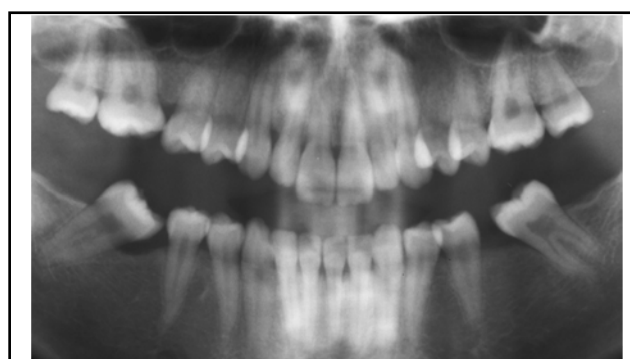
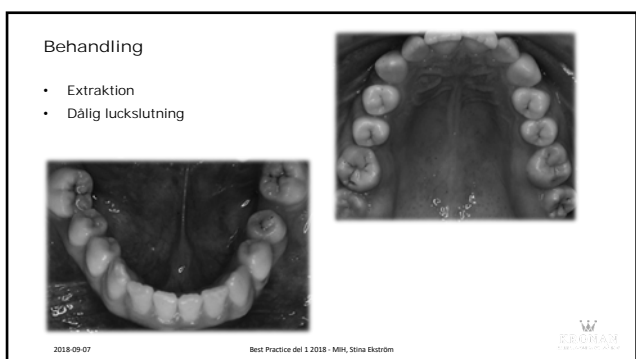
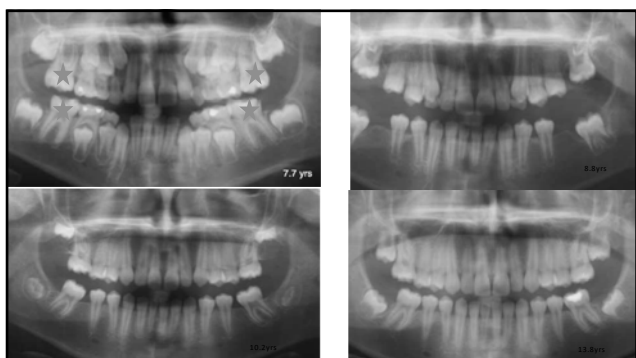
Behandling

- Extraktion
- God luckslutning

2018-09-07 Best Practice del 1 2018 - MH, Sina Ekström

2018-09-07 Best Practice del 1 2018 - MH, Sina Ekström

2018-09-07 Best Practice del 1 2018 - MH, Sina Ekström



Poor PJ - these teeth often hurt, making it hard to eat some foods and to do a good job with the toothbrush.

OUCH!

Molar Hypoplasia is a sort of birth defect, where the tooth isn't made properly before it's born into your mouth - said the Dentist.

TACK!

stina.ekstrom@btvkronan.se

2018-09-07 Best Practice del 1 2018 - MH, Stina Ekström

Referenser

Lodi S, A. Sakthong C, et al. Anomalous Maxillary Incisor Hypoplasia. *Dental* 2006; 89(2):132-134
 Nelson S, Albert JM, Song C, et al. Increased Enamel Hypoplasia and Very Low Birthweight Infants. *J Dent Res* 2013; 92(7):788-794
 Wengle-Koch S, Marsson S, Högberg B, et al. Molar Incisor Hypoplasia and Child Height at 20- to 22-year-old Swedish children born preterm. *Eur J Oral Sci* 2011; 119:13-19
 Järvinen K, Rönkä JM, Högberg B, et al. Etiologic Factors Influencing the Prevalence of Enamel Hypoplasia in Permanent First Molar in a Group of Swedish Children. *Eur J Oral Sci* 2001; 109:1-6
 Marsson S, Wengle-Koch S, Rönkä JM, et al. Factors Involved in the Etiology of Enamel Hypoplasia (MH). *Eur J Paediatr Dent* 2002; 13:1-11
 Alvarado S. Etiology of Molar Incisor Hypoplasia: A Systematic Review. *Eur Arch Paediatr Dent* 2010; 11(2):14-18
 Clarke M, Weaver S, Shei K. Clinical Features on Molar Incisor Hypoplasia (MH) Part 1: Distribution and Pulpine Association. *Eur Arch Paediatr Dent* 2008; 9:180-186
 Fogarty M, Ludvigsson J, Wilson G, et al. Etiology of severe demarcated enamel hypoplasia - an evaluation based on prospective medical and social data from 17,000 children. *Swed Dent J* 2011; 35:37-47
 Lodi S, Marsson S, Lindman PL, et al. Molar Incisor Hypoplasia and Genetic Link Findings. *Eur Arch Paediatr Dent* 2009; 10(4):224-7
 Clarke M, Marsson S, Högberg B. Etiology of molar incisor hypoplasia: a critical review. *Int J Paed Dent* 2009; 10:12-18
 Rönkä K, Högberg B, Jäger E, et al. Oral Health-related Quality of Life in Swedish Children Before and After Dental Treatment under General Anesthesia. *Acta Odontol Scand* 2015; 73(1):1-7
 Marsson S, Wengle-Koch S. Effect of COP-III Agents on the Demineralization and Recalcification of Enamel in vitro. *J Dent* 2007; 35(10):615-8
 Fogarty M, Shei K, Wengle-Koch S, et al. Effect of Active Treatment on Different Caries Microorganisms in vitro. *Swedish Dent J* 2008; 32(2):136-147
 Kim S, Kim SY, Jeong YS, et al. The Evaluation of Root Irrigation for Molar Incisor Hypoplasia. *Int J Paediatr Dent* 2011; 12(5):241-248
 Clarke M, Marsson S, Palmara A, et al. Root Irrigation of Developmentally Hypoplasia Enamel. *Int J Paediatr Dent* 2014; 15(1):51-55
 Vignati M, Simeoni G, Serravalle E. Retention of Fluoride Varnishes on Two Different Enamel of Application in Teeth with Hypoplasia Enamel (MH): a 4-year clinical study. *Eur Arch Paediatr Dent* 2009; 10(10):229-236
 W. Shei K, Brewer M, Palmara A, et al. Microleak Bond Strength of Resin Composite to Teeth Affected by Molar Incisor Hypoplasia Using 2 Adhesive Systems. *Paediatr Dent* 2008; 20(1):232-241
 Vignati M, Chianese A, Simeoni G. Evaluation of Composite Restorations in Hypoplasia Enamel permanent molars: a four year clinical study. *Eur J Paediatr Dent* 2003; 6:143-148
 Pavesio E, Sandgren S, Marsson S, Högberg B, Thomsen M. A Randomized Controlled Trial of Case Therapy in Young Children with Enamel Hypoplasia. *J Dent Res* 2011; 90(10):1411-7
 Rönkä JM, Rönkä JM, Ray PP. Pulpal Status of Hypoplasia Permanent Molars. *Paediatr Dent* 2007; 9:614-620
 Fogarty M, Ludvigsson J, Shei K, et al. Retrospective Analysis of Enamel Substrata beneath Apparently Intact Hypoplasia Enamel in Molar Teeth with Molar Incisor Hypoplasia. *Int J Paediatr Dent* 2008; 9:133-140
 Akbari S, Simeoni G, W. Shei K, et al. Extraction of First Permanent Molar Teeth: results from three dental hospitals. *Int Dent J* 2007; 20:1-6
 Järvinen K, Mäkelä M. Evaluation of spontaneous space closure and development of permanent dentition after extraction of hypoplasia permanent first molar. *Int J Paediatr Dent* 2007; 8:1229-1235
 Wright PJ. The Intra-Root Seal Technique for Managing Obsolete Cases of Pulpitis in young permanent incisors. *Paediatr Dent* 2002; 14:249-252
 Park H, Lindholm M, B. Akpan M, et al. Clinical implications: An overview of clinical and scientific considerations. *World J Clin Cases* 2015; 10(14):2134-41
 Reinhardt N, Adu S. Etiology, indication and limits of the microabrasion technique. *Quintessence Int* 2001; 32(8):611-615

2018-09-07 Best Practice del 1 2018 - MH, Stina Ekström

KRONAN
BARNSPECIALISTTANDVÅRDEN

Barnspecialisttandvården Kronan
Sturegatan 2, 14 tr | 172 31 Sundbyberg
08-564 854 65 | info@btvkronan.se | www.btvkronan.se

2018-09-07